



## ZFR 75 INERT - ATEX EXPLOSION PROOF



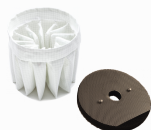
OEM ORIGINAL EQUIPMENT MANUFACTURERS



ADDITIVE MANUFACTURING



EXPLOSIVE AND CONDUCTIVE DUSTS



- ✓ Side channel blower motor , powerful and silent, totally maintenance free, suitable for continuous duty
- ✓ Foam filter for protection of motors from liquid mist
- ✓ High filtration efficiency
- ✓ Atex certified for Zone 22
- ✓ Conceived for fine and hazardous dust suction
- ✓ Earth grounding
- ✓ Inert liquid bath system for the safe discharge of explosive and conductive metal dust
- ✓ Easily removable container for safe disposal of collected material
- ✓ Prevents the build-up of the explosive atmosphere inside the vacuum
- ✓ Inert container marked: Ex II 3D h IIIC T85°C X Dc



### SUCTION UNIT

Atex zones		ATEX Z22
Marking		Ex II 3D Ex tc IIIC T135°C X Dc
Voltage	V - Hz	400 - 50 3~
Power	kW	3
Max water lift	mmH <sub>2</sub> O	2.600/2.000
Max air flow	m <sup>3</sup> /h	370
Suction inlet	mm	80
Noise level (EN ISO 3744)	dB(A)	75



### FILTER UNIT

Filter Type		Star
Surface - Diameter	cm <sup>2</sup> -mm	20.000 - 500
Material - Efficiency	IEC 60335-2-69	Polyester - ANT M
Liquid filter		PPL
Oil mist fiber filter		3x



### COLLECTION UNIT

Collection tank		AISI304 Stainless steel
Capacity	lt	27
Dust capacity	lt	13



### VOLUME

Dimensions	cm	76x66x170h
Weight	kg	105



## SUCTION UNIT

The suction unit is a side channel blower, with direct coupling between the motor and the impeller fan. It designed without any transmission system, and is therefore silent, totally maintenance free and suitable for continuous duty operations.



## FILTER UNIT

It is possible to clean the filter using an integrated mechanical system: an external lever shakes the filter vertically and enables to clean the filter thoroughly and safely, maintaining constant suction performance and preventing any dispersion of dust in the environment.



## COLLECTION UNIT

The vacuum is assembled onto a sturdy steel chassis, and provided with industrial quality wheels , that make it suitable for mobile service even when used on rough surfaces. Thanks to a discharge valve, it is possible to easily and safely empty the container. The container contains a liquid bath inerting system that makes it possible to prevent fires / explosions due to flammable powders such as aluminum or titanium. The appropriate liquid must be used depending on the type of explosive powder. The vessel contains a stainless steel quick-lock deflector, a PPL separation filter to reuse oil for the next cleaning cycle, and a demister to prevent the oil mist from being sucked into the main filter. A pressure relief valve prevents the risk of accumulation of explosive gas in a vacuum.



## OPTIONALS

- ✓ ABSOLUTE HEPA FILTER /H14
- ✓ STAINLESS STEEL CHAMBER